

Jordan fishwick

95-97 School Road
Sale
Cheshire
M33 7XA
sale@jordanfishwick.co.uk
0161 962 2828



1 Bakersfield Place, Sale, M33 2UB

£160,000

www.jordanfishwick.co.uk





Jordan fishwick

- First Floor Apartment
- Gated Residents Parking
- Walking distance to Sale Town Centre & Sale Metrolink
- Council Tax Band - B
- One Double Bedroom
- Fully Fitted Kitchen
- Close to Local Amenities & Public Green Spaces
- EPC - B

This modern first floor one bedroom apartment is conveniently positioned close to Sale Town Centre and within walking distance of Sale Metrolink. The accommodation is well presented and spacious throughout and also benefits from gated residential parking with an allocated parking space and communal bike shelter.

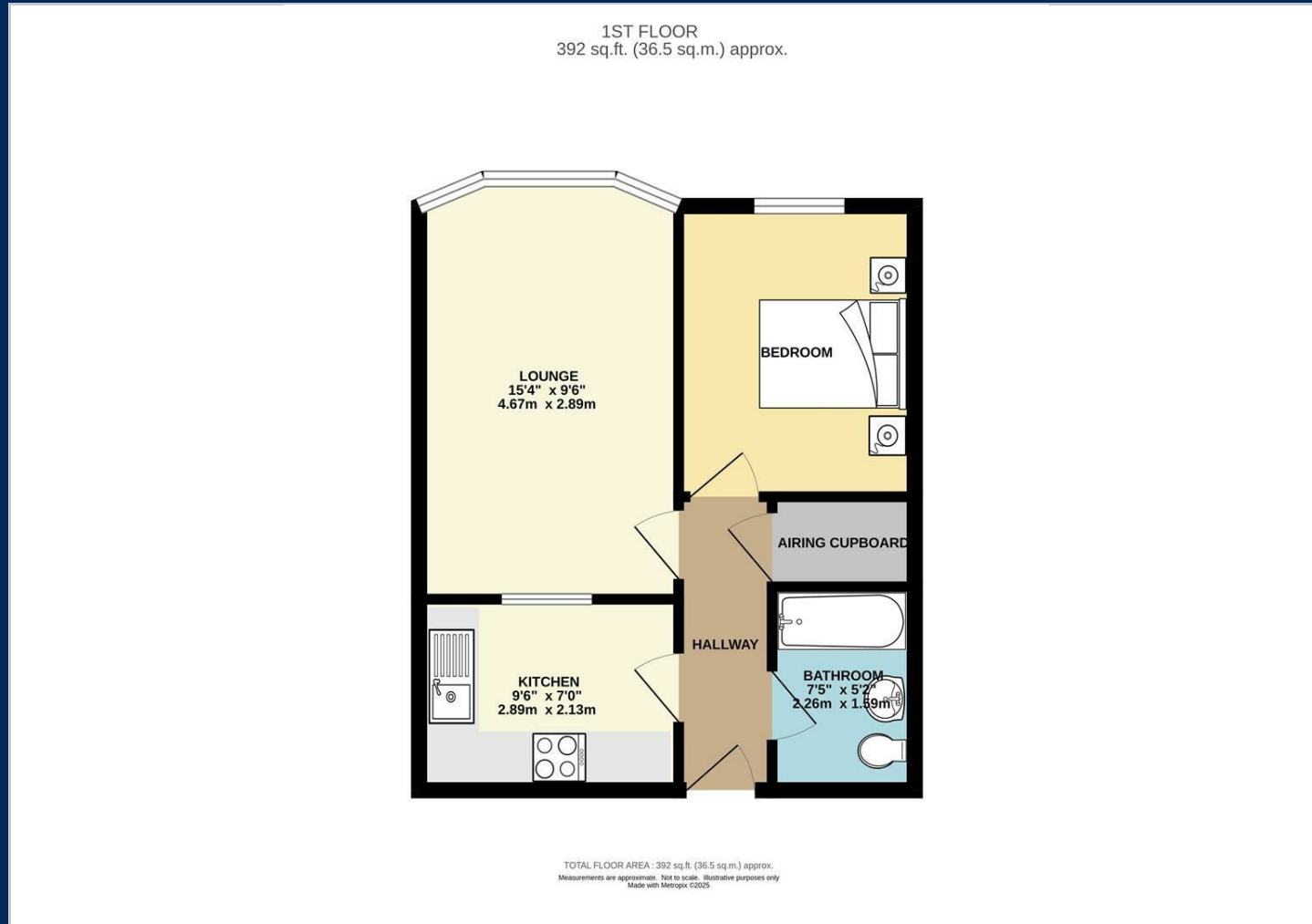
A select gated development which is neatly tucked away in a quiet and convenient part of Sale Town Centre. The accommodation reveals a well presented lounge diner, contemporary kitchen, a generous double bedroom, airing/storage cupboard, and three piece bathroom suite completes this spacious apartment. Externally is an allocated parking space with well tended communal gardens. Conveniently located for those who require access to Sale Metrolink and beyond. Sale Town Centre and it's selection of shops, restaurant's, bars, and cafes are within walking distance as well as local green spaces.

The property further benefits from having NO ONWARD CHAIN. Ideal for first time buyers and investors.





Floor Plans

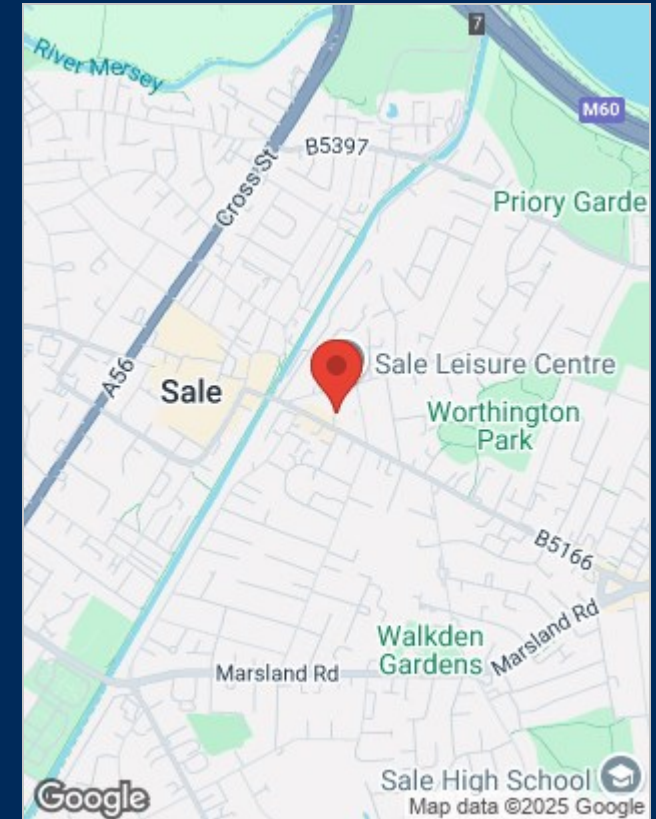


Viewing

Please contact our Sale Office on 0161 962 2828 if you wish to arrange a viewing appointment for this property or require further information.

The particulars are set out as a general outline only for the guidance of intended purchasers or lessees, and do not constitute, any part of a contract. Nothing in these particulars shall be deemed to be a statement that the property is in good structural condition or otherwise nor that any of the services, appliances, equipment or facilities are in good working order. Purchasers should satisfy themselves of this prior to purchasing.

Location Map



Energy Performance Graph

